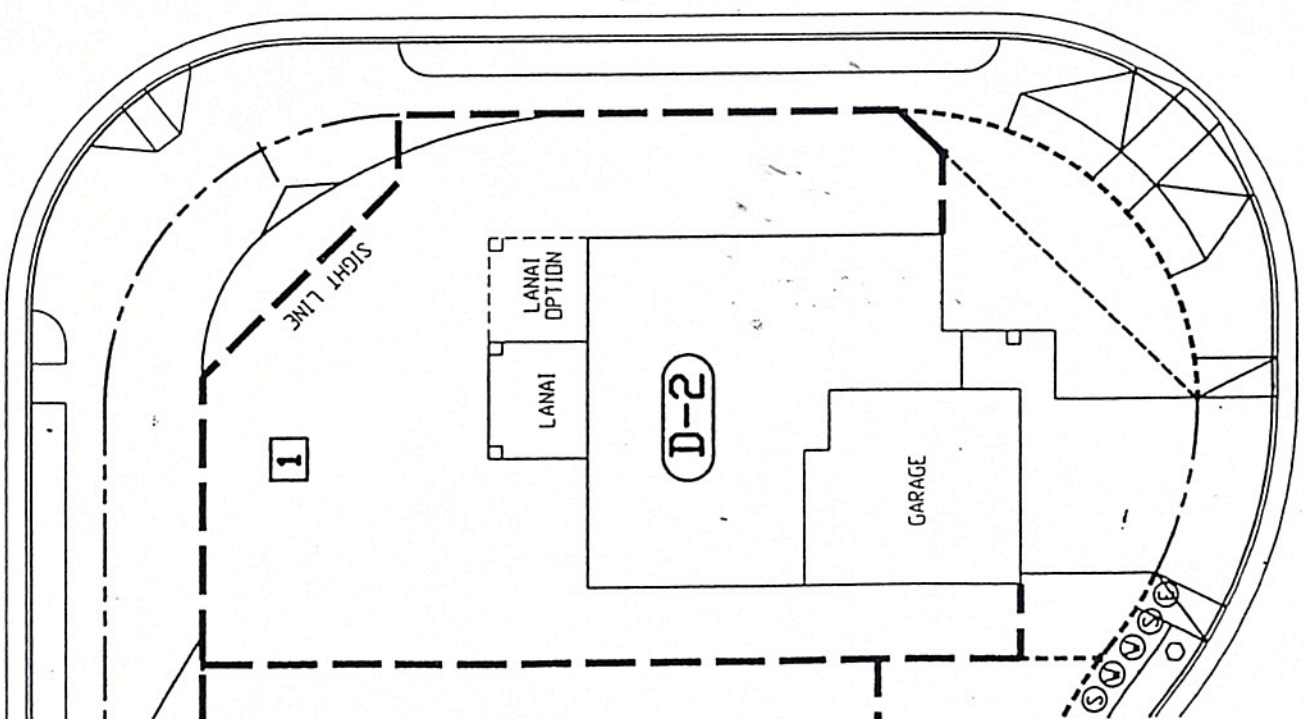
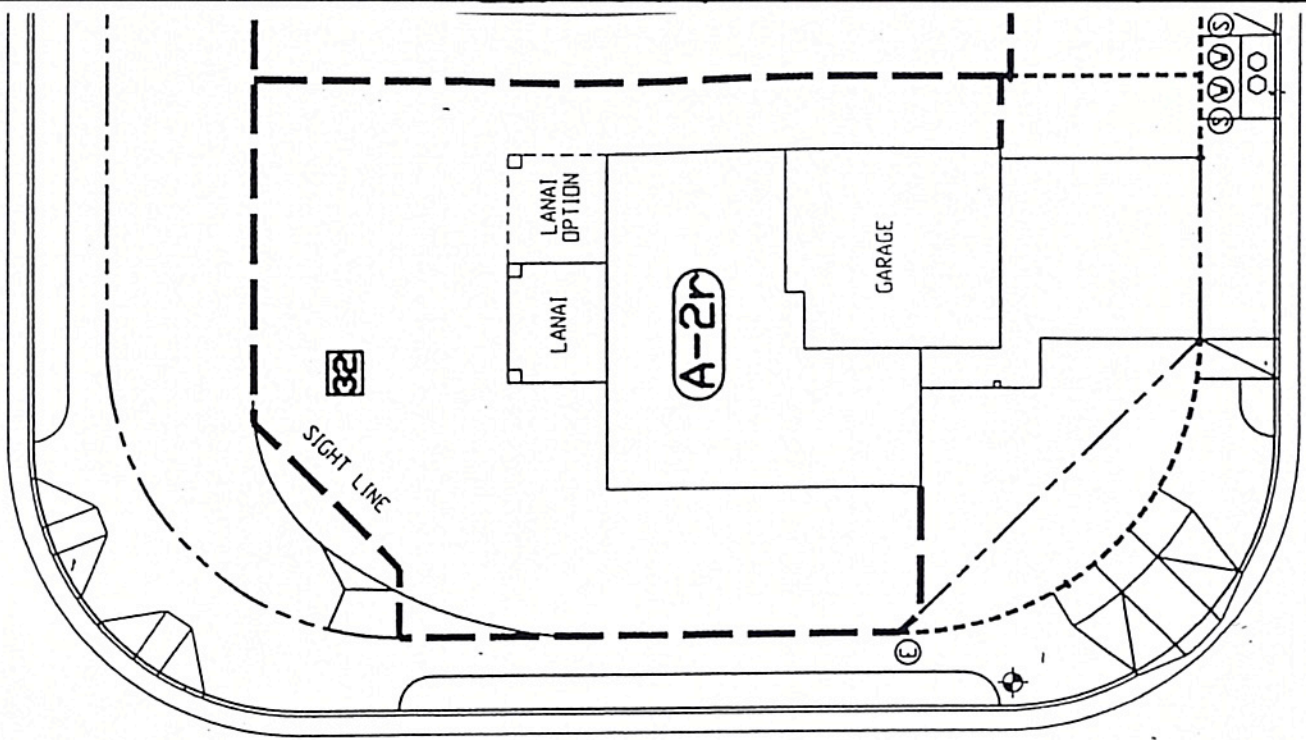


ANDONUI STREET



ROYAL KUNIA SITE 9 FENCE AND WALL GUIDELINES

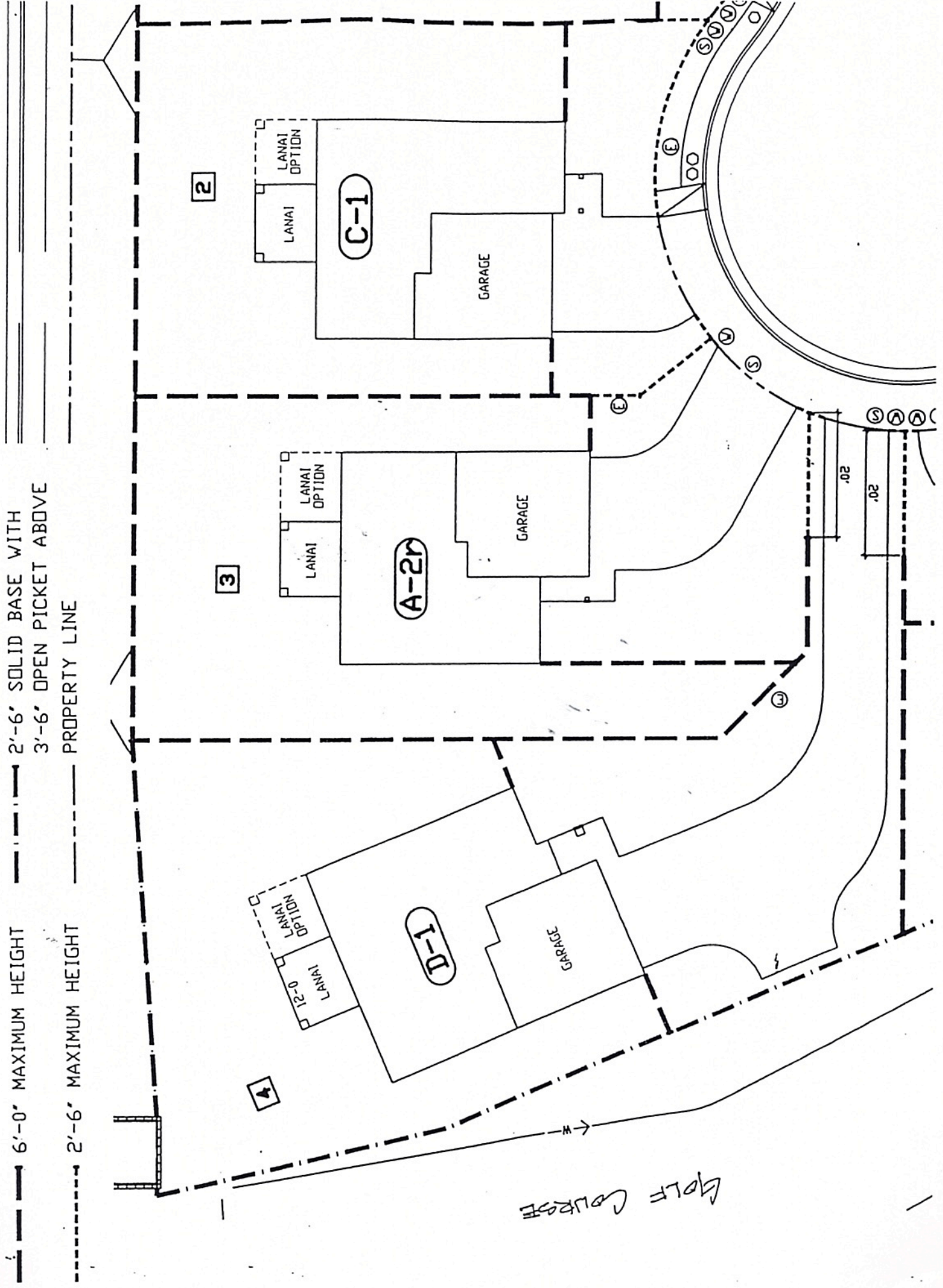
————— 6'-0" MAXIMUM HEIGHT

————— 2'-6" SOLID BASE WITH
3'-6" OPEN PICKET ABOVE

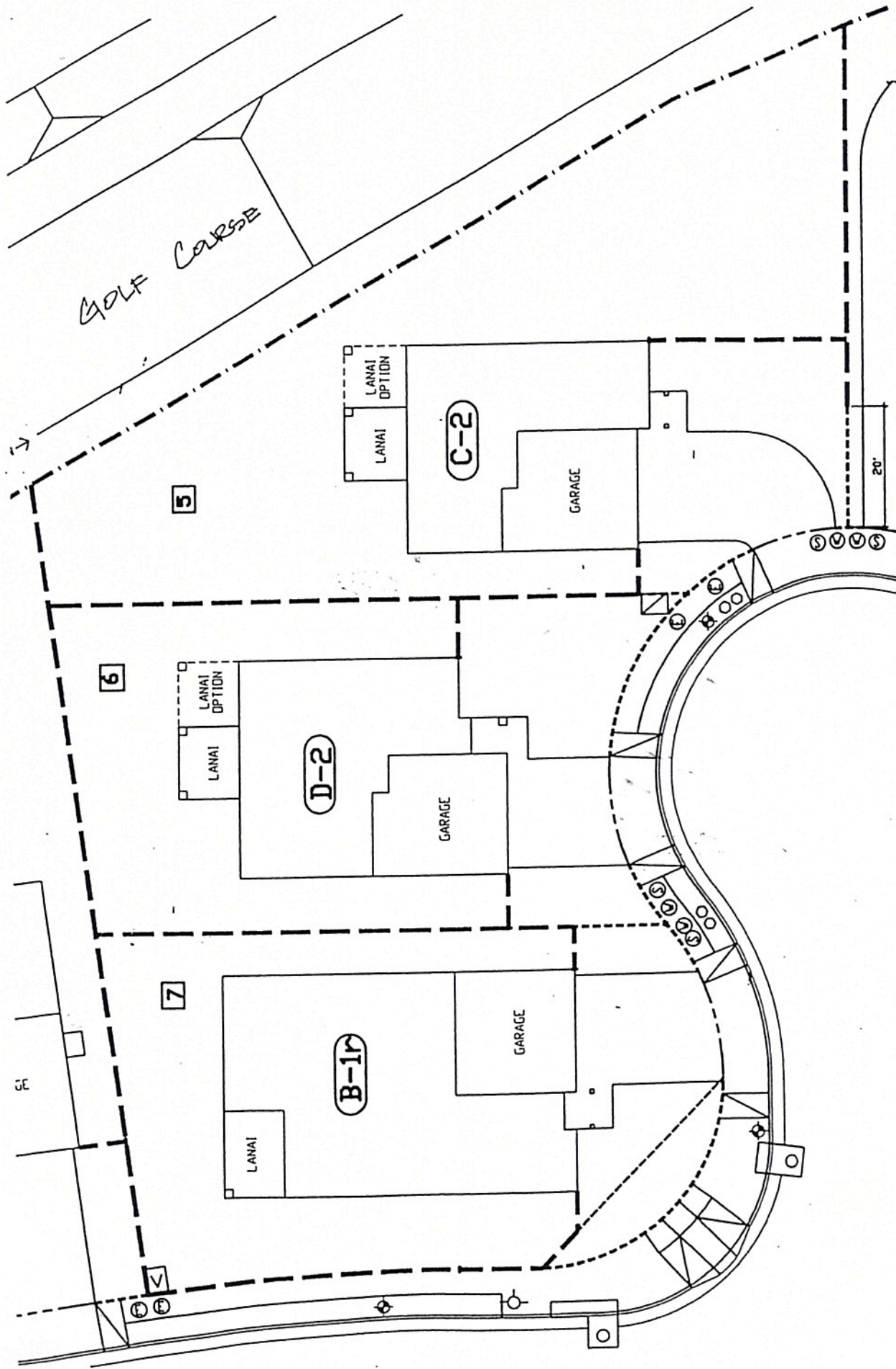
----- 2'-6" MAXIMUM HEIGHT

----- PROPERTY LINE

ROYAL KUNIA SITE 9 FENCE AND WALL GUIDELINES



GOLF COURSE



ROYAL KUNIA SITE 9 FENCE AND WALL GUIDELINES

- 6'-0" MAXIMUM HEIGHT
- · - · - 2'-6" SOLID BASE WITH 3'-6" OPEN PICKET ABOVE
- 2'-6" MAXIMUM HEIGHT
- PROPERTY LINE

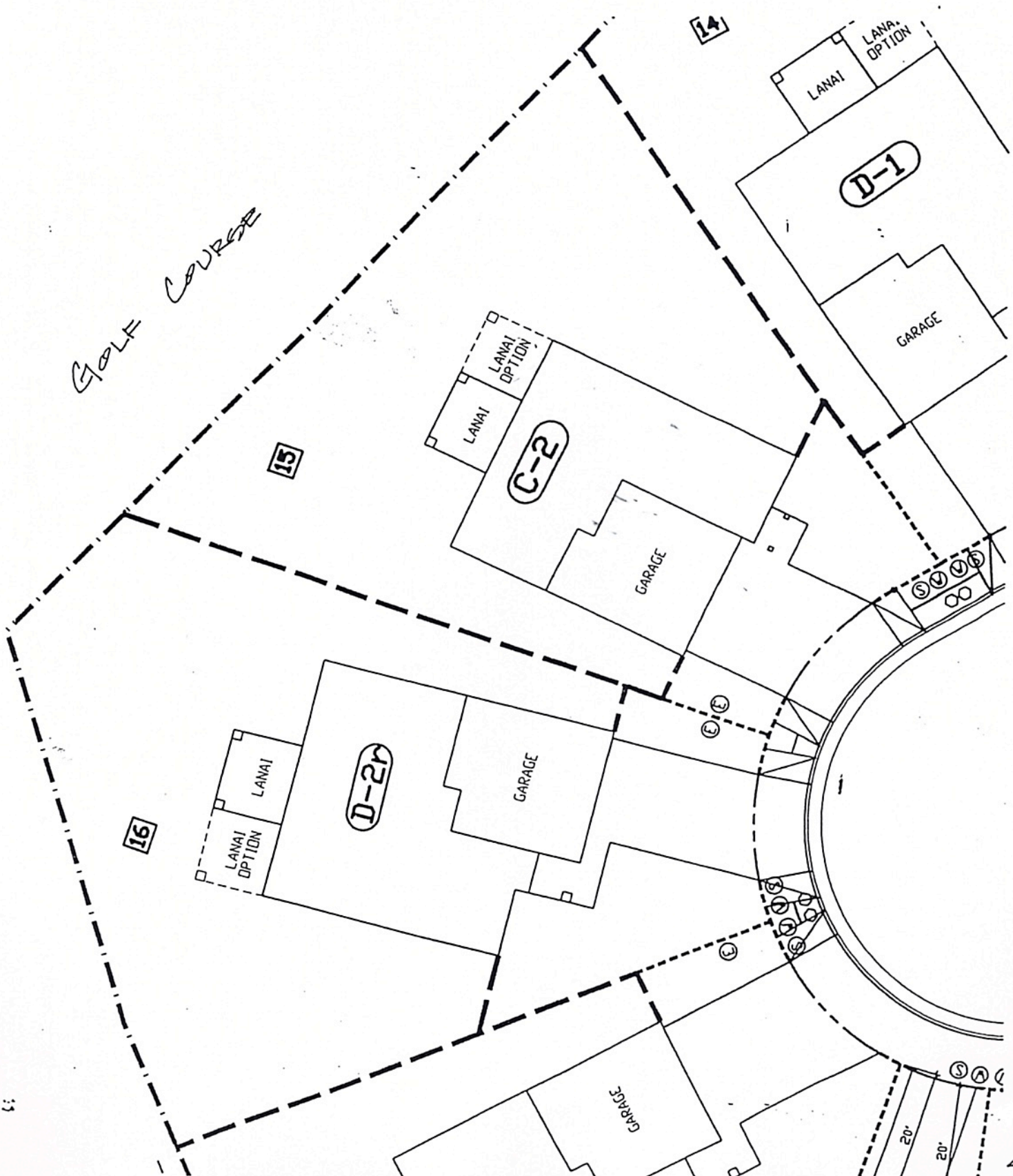
ROYAL KUNIA SITE 9 FENCE AND WALL GUIDELINES

--- 6'-0" MAXIMUM HEIGHT

- · - · - 2'-6" SOLID BASE WITH
3'-6" OPEN PICKET ABOVE

----- 2'-6" MAXIMUM HEIGHT

----- PROPERTY LINE



GOLF COURSE

15

14

16

D-1

C-2

D-2r

GARAGE

GARAGE

GARAGE

GARAGE

LANAI

LANAI
OPTION

LANAI

LANAI
OPTION

LANAI

LANAI
OPTION

S V V V V

S V V V V

S A C

20'

20'

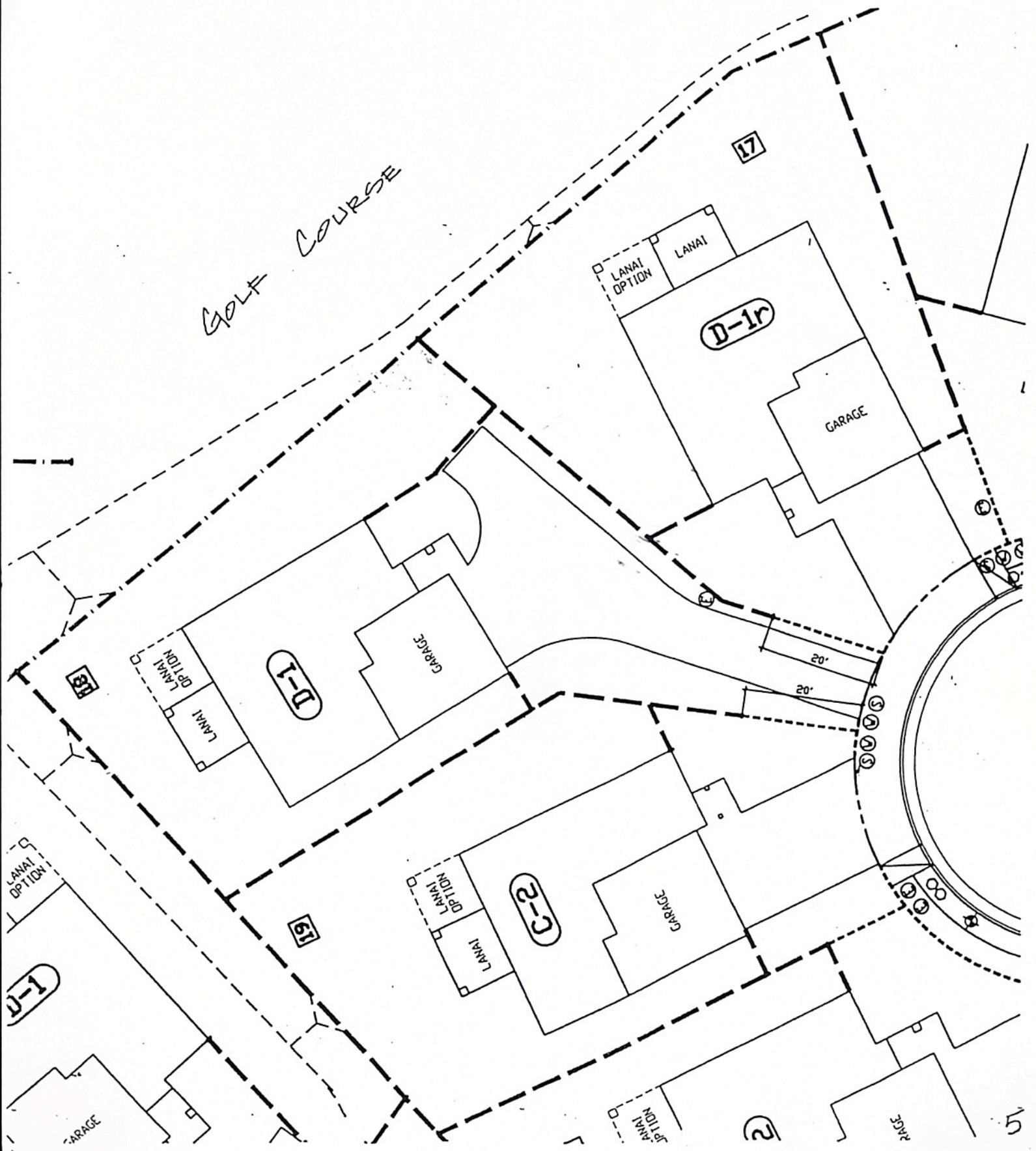
ROYAL KUNIA SITE 9 FENCE AND WALL GUIDELINES

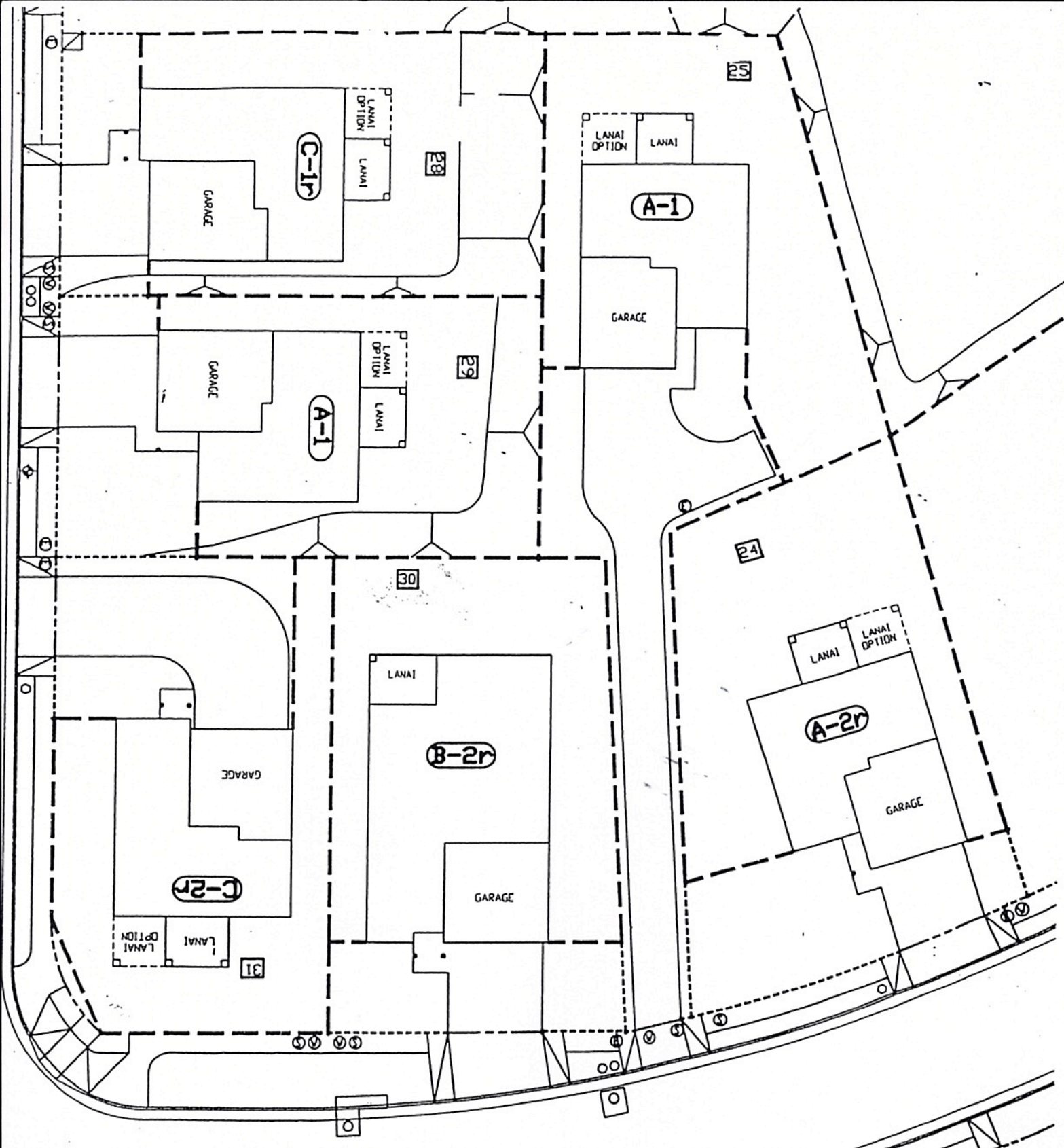
----- 6'-0" MAXIMUM HEIGHT

----- 2'-6" SOLID BASE WITH
3'-6" OPEN PICKET ABOVE

----- 2'-6" MAXIMUM HEIGHT

----- PROPERTY LINE



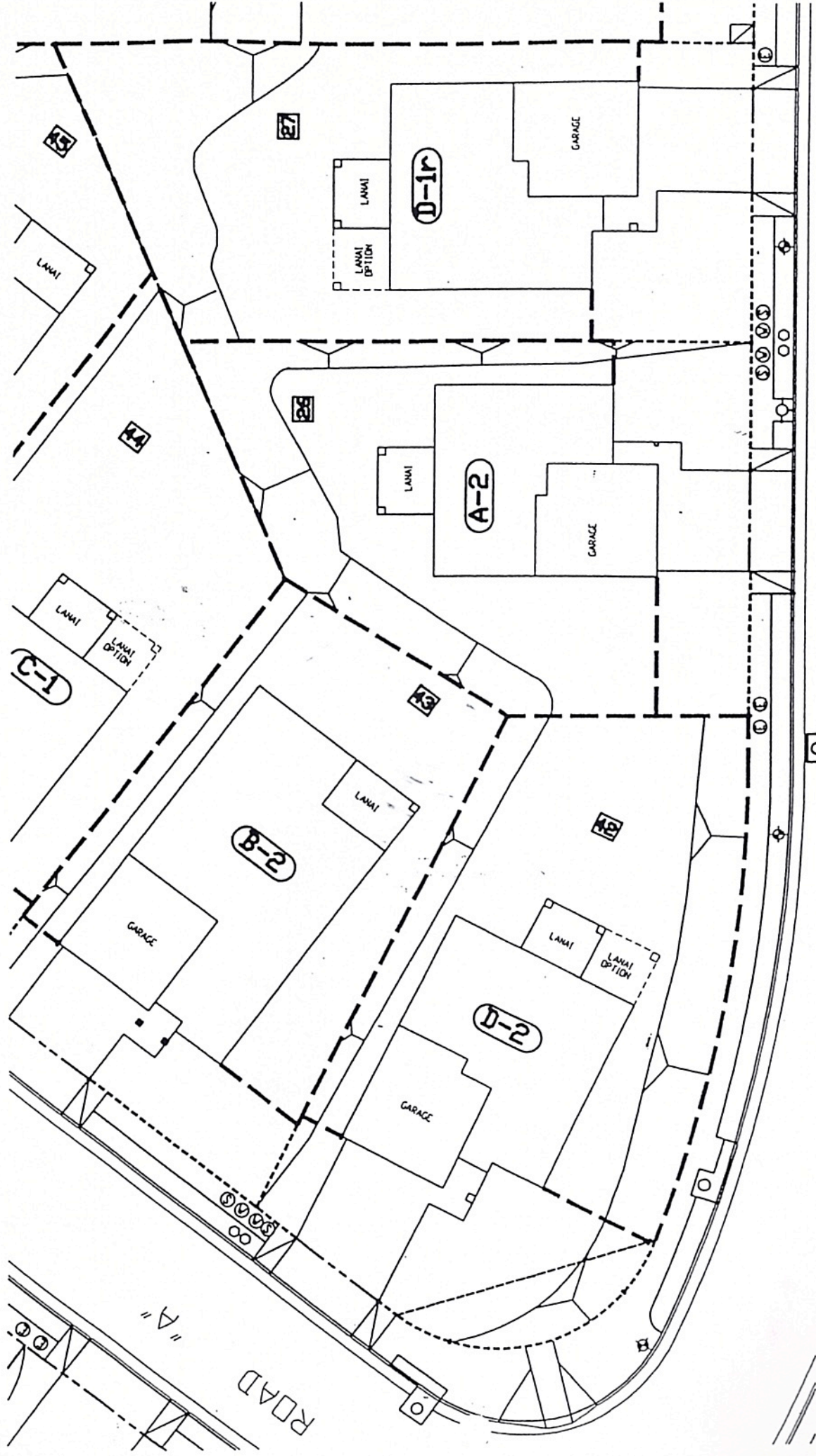


ROYAL KUNIA SITE 9 FENCE AND WALL GUIDELINES

-
- 6'-0" MAXIMUM HEIGHT
 2'-6" SOLID BASE WITH
 3'-6" OPEN PICKET ABOVE
- 2'-6" MAXIMUM HEIGHT
 PROPERTY LINE

ROYAL KUNIA SITE 9 FENCE AND WALL GUIDELINES

- 6'-0" MAXIMUM HEIGHT
- · - · - 2'-6" SOLID BASE WITH 3'-6" OPEN PICKET ABOVE
- 2'-6" MAXIMUM HEIGHT
- PROPERTY LINE



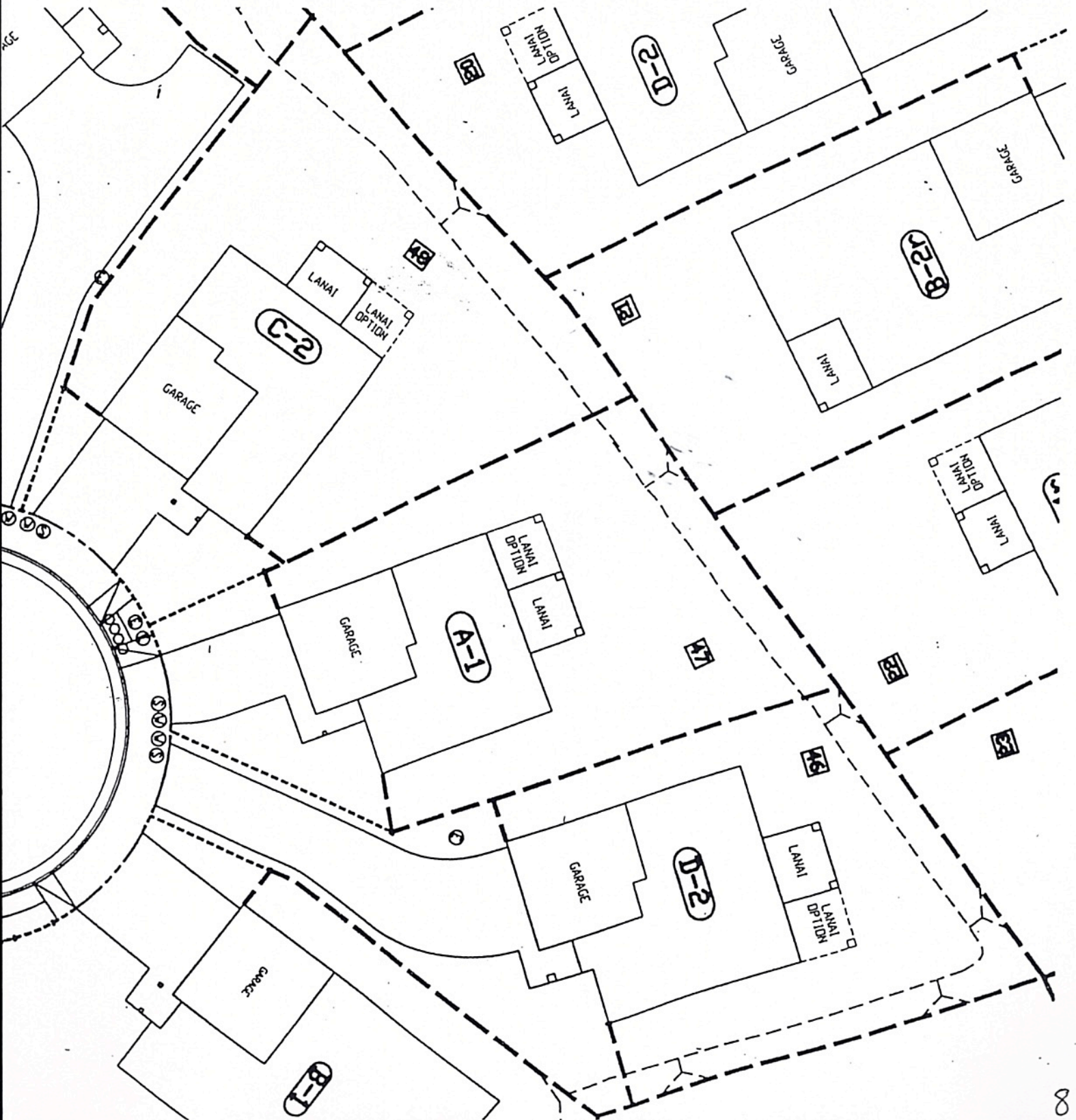
ROYAL KUNIA SITE 9 FENCE AND WALL GUIDELINES

——— 6'-0" MAXIMUM HEIGHT

——— 2'-6" SOLID BASE WITH
3'-6" OPEN PICKET ABOVE

----- 2'-6" MAXIMUM HEIGHT

----- PROPERTY LINE



6'-0" MAXIMUM HEIGHT

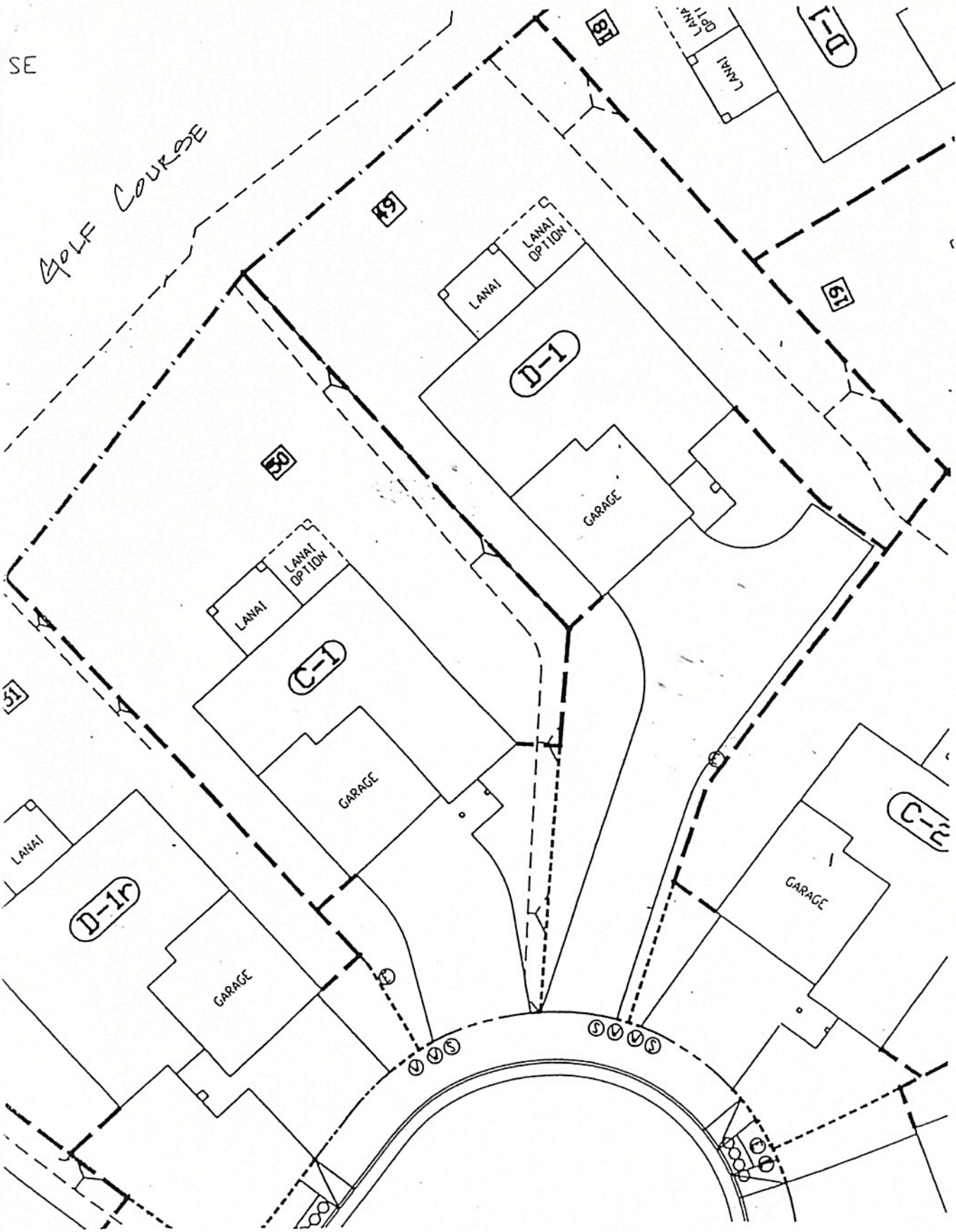
2'-6" SOLID BASE WITH
3'-6" OPEN PICKET ABOVE

2'-6" MAXIMUM HEIGHT

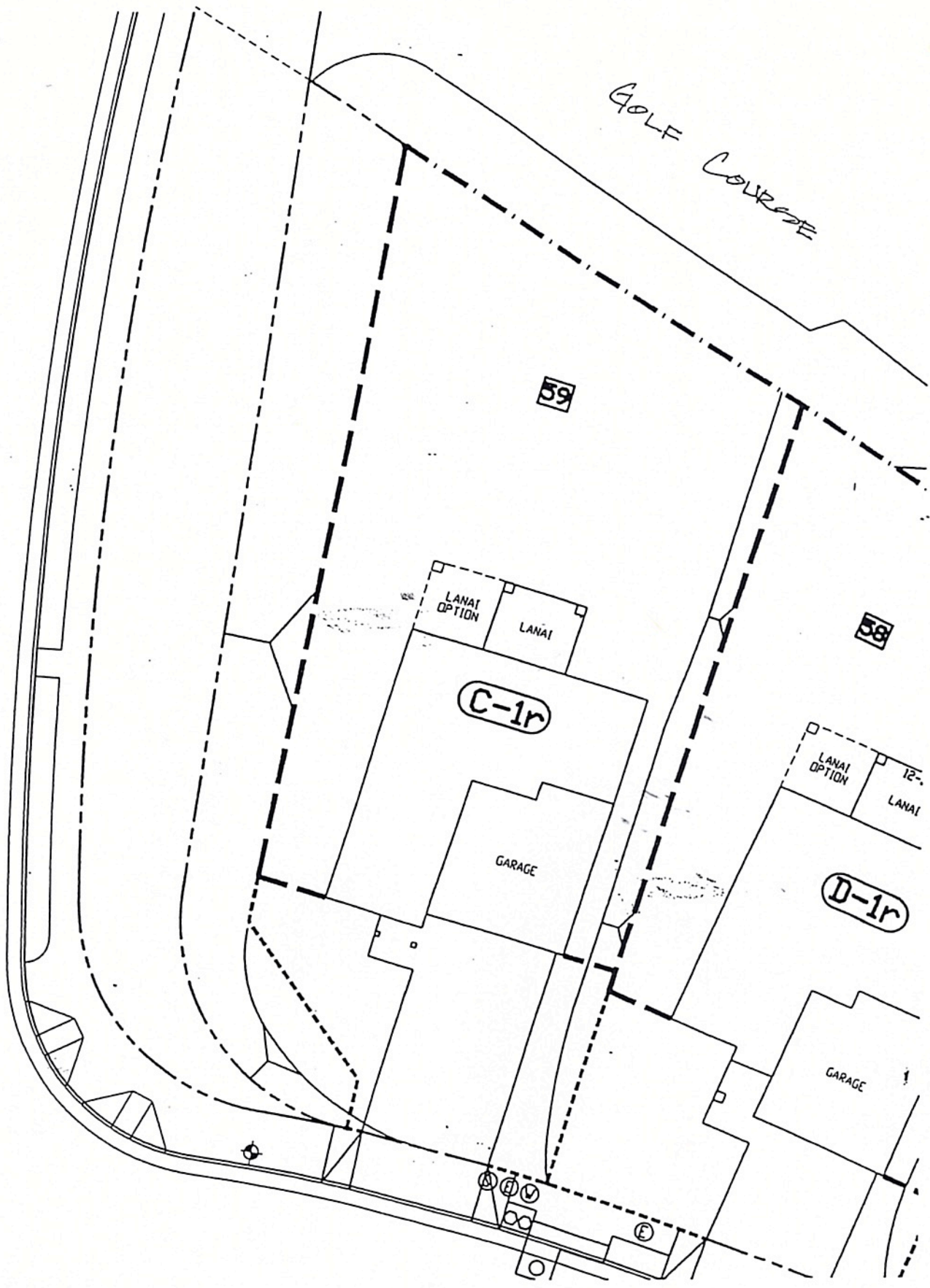
PROPERTY LINE

SE

GOLF COURSE



GOLF COURSE



ROYAL KUNIA SITE 9 FENCE AND WALL GUIDELINES

- — — — — 6'-0" MAXIMUM HEIGHT
- · — · — · — 2'-6" SOLID BASE WITH 3'-6" OPEN PICKET ABOVE
- - - - - 2'-6" MAXIMUM HEIGHT
- - - - - PROPERTY LINE